

FLC Annual Meeting



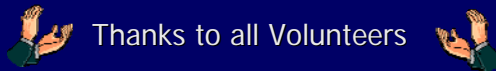
January 27, 2008

1

Annual Meeting Agenda

1. Welcome / Call to Order – Ron Iman
2. Opening prayer – Pastor Wilder
3. Introduction of Current and Newly Elected Council Members
4. Council's Areas of Ministry focus for 2007
5. West Side Ministry Campus update – Jeremy Oswald
6. **Approval of changes in Endowment Fund By-laws – Ron Iman**
7. Faith Lutheran Bus feasibility study – Ron Iman
8. Scheduled rotation of pastors for weddings, baptisms & funerals – Ron Iman
9. 2008 Budget – Phil Mayo
10. **Approval of 2008 budget – Ron Iman**
11. Other Business
12. Senior Pastor Comments – Pastor Wilder
13. Closing Prayer – Pastor Wilder
14. Adjournment

2



Thanks to all Volunteers

Our heartfelt thanks to the many, many members of Faith who have volunteered in so many different ways – we could not make it without your help!!!

- | | | |
|-----------------------|------------------------------|-------------------------|
| -Ambassadors | -Council recording secretary | -Musicians |
| -Bulletin assembly | -Crown Financial studies | -Offering counters |
| -Church Maintenance | -Food service | -Stephen ministers |
| -Church office help | -Greeters | -Greeters |
| -Committee service | -Greeters | -Sunday School teachers |
| -Communion assistants | -Faith Care Ministry Team | -VBS teachers |
| -Council service | -Lay readers | -Ushers |

3

Tres Pastores



Bruce Wilder



Mike Easton



David Breidenbach

FLC Staff
Children of Faith Pre-School

4

Faith Will Host LCMC Annual Gathering again in 2008



LCMC now has 212 Congregations
FLC was the 114th Congregation to join LCMC

5

FLC Council Members 2007

- Ron Iman – President
- Jeremy Oswald – Vice President
- Jim Hansen
- Brent Jacobs
- Al Lanting
- Randy Riddle
- Judi Stewart
- Kris Stichman
- Tim Reiser
- Larry Wilson

- Gail Taylor – Recording Secretary

6

Newly Elected (or re-elected) Council Members

- Ron Iman - President
- Jim Hansen
- Brent Jacobs
- Debbie Peres
- Jim Campbell

7

FLC Mission Statement

To lead people to Christ, incorporating them into the life of the church, and equipping one another for effective Christian living.

8

Council Meeting Format

To enable us to be better prepared to carry out our mission, the Council meeting format continues from 2006 as:

- 1 hour – Business & Ministry Reports
- 2 hours – In-depth Review of a Special Area of Ministry Focus

9

Areas of Ministry Focus during 2006

- Stewardship
- Physical Modifications for 11am Service
- Review of Pastoral Office
- Publications
- FLC Website

10



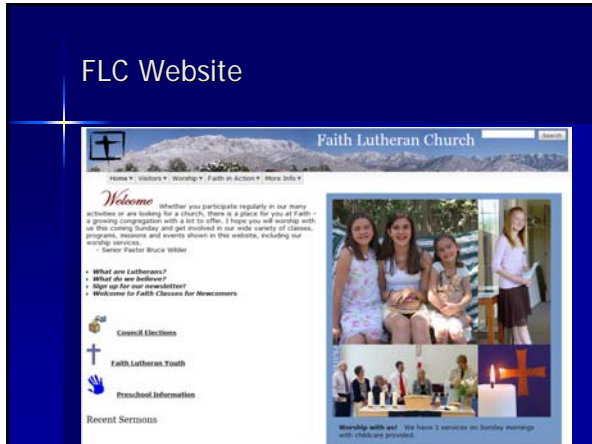
11

FLC Website – Brent Jacobs

- Site redesign completed – we are still tweaking some pages
- Monthly Church calendar is continuously updated
- Special thanks to Roger Campbell and Pat Orell

12

FLC Website



2007 FLC Long Term Vision – Judi Stewart

- In looking at the Long Term Vision for the church, we want our Vision and Mission statements to be the focus of our planning.
- “The filter must always be: Does this activity fulfill one of the purposes for which God established this church?” – Rick Warren “The Purpose Driven Church”

14

2007 FLC Long Term Vision – Judi Stewart

- Care Ministry & Elder Care
- Children of Faith
- Christian Education Ministry and School of Ministry
- Financial Resources
- Leadership & Service Ministry
- Lutheran Congregations in Mission for Christ
- Music Ministry
- Operational Management
- Outreach to Community and World
- Property
- Prayer Ministry
- Small Group Ministry
- Staff Development
- Youth Ministry
- Worship Services

15

2007 FLC Endowment Fund – Jeff Doll

- Endowment Committee to re-write by-laws (will be voted on at this meeting)

16

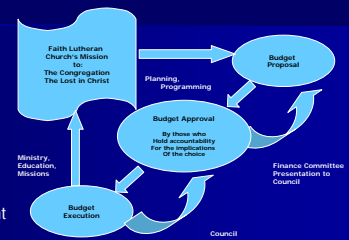
2007 FLC Mission Activities – Kris Stichman

- Past, Present and Future
- Types of Missions that FLC is involved with
- Decision making process – how do we decide who received our time, talents and money
- How do we make our mission work more visible to the congregation and the community

17

2007 FLC Financial Operations – Randy Riddle

- Operations Cycle
- Philosophy
- Planning
- Programming
- Commitments
- Obligations
- Expenditures
- Debt management
- Investments
- Recommendations (increase reserve to two months)

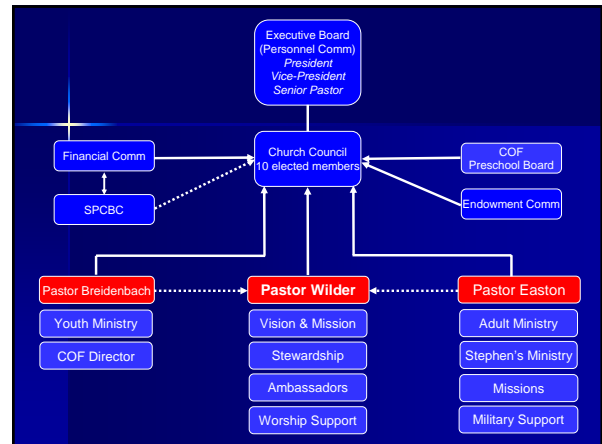


18

2007 FLC Office Operations – Jeremy Oswald

- Director of Operations – Amber Webb
- Facilities Manager – Jesse Vig
- Communication Coordinator/Media – Pat Orell
- Director of Youth Ministry – David Breidenbach
- Lay Ministries Director – Kirsten Wilder
- High School Ministries – Jeremy Rodriguez
- COF Pre-school Director – Anne Crouch
- Middle School Youth Minister – Dawn Selberg
- Elementary School Minister – Stephanie Doshier
- Associate Pastor & Director Adult Ministries – Mike Easton
- Senior Pastor – Bruce Wilder

19



2007 FLC Adult Ministries – Larry Wilson

- Women's ministries
- Men's ministries
- Participation rates
- Publicity
- Key Questions:
 - How to draw in more participation, across the span of ages / demographics of the FLC membership, to better expose more, for effective Christian living.
 - How can FLC Council (better) support the FLC ministry team and the ministry activities of FLC.

21

Children of Faith Pre-School (Jan 2008) – Judi Stewart

- **Mission Statement:** Lead children to Christ by providing quality learning experiences that will enrich children's lives in a loving and nurturing environment
- Offer members of the congregation and the community a high quality preschool education for their young children
- Reach those families who have no church affiliation through non-threatening activities such as the congregational picnic, coffee house concerts, etc

22

Areas of Ministry Focus for 2008

- **Security at Faith** – Buzz Busboom
- **FLC Service Opportunities** – Al Lanting
- **FLC Youth Ministries** – Debbie Peres
- **FLC Sunday School and VBS** – Kris Stichman
- **FLC Music Ministries** – Brent Jacobs

23

Areas of Ministry Focus for 2008

- **FLC Leadership Role in LCMC** – Jim Hansen
- **FLC Committee Organization & Effectiveness** – Randy Riddle
- **FLC Evangelism: Invite a Friend to Church** – Larry Wilson

24

2007/2008 FLC West Side Campus Ministry – Jeremy Oswald

FLC's West Side Mission Study Team

- Bob Anderson
- Larry Breen
- Debbie Elder
- Tom Stewart
- Larry Wilson
- Pastor Bruce Wilder
- Jeremy Oswald

25

WSMST Directive

Pursue a fact-finding mission related to the possibility of a west side campus* while keeping Faith's Mission and Vision in mind.

**This fact-finding mission is to operate using the parameters of One Church with the same staff for two campuses. Importantly, no actions will be taken unilaterally by the Council-any action would require Congregational input and approval.*

26

WSMST Objectives

Provide research and findings (no conclusions) to address the directive using the following tools:

- Survey sent to west side residents attending FLC
- Communication with congregation through Faith Alive
- Interviews with existing **out-of state** multi-site churches
- Demographic studies of two west side areas
- Visits to west side churches
- Initial inquiries into leasing/financing questions
- Adding FLC website link for Q&A

27

Survey* Notes from Current Faith Attendees Living on the West Side

- 79% of respondents either agreed or strongly agreed with the establishment of a west side campus
- Of those responding favorably, many inquired about the preaching rotation
- Commitments to attend and invite neighbors to a west side location respondents were high while commitments to service endeavors were lower
- 39% of respondents were above age 51-the Percept studies reviewed later identify different age demographic averages

*48 households responding

28

Multi-Site "Out-of-State" Church Interviews

Conducted Phone Interviews with Senior Pastors on the following topics:

- History of Congregation
- History and research related to adding campus/campuses
 - Contact with existing and new members
 - Location
 - Determination of key individuals/anchor
 - Demographics
- Number and types/styles of services
- Staffing
- Retrospect

29

Demographic Analysis of West Side Neighborhoods-Percept Studies

Two Areas-Northwest Albuquerque and Rio Rancho

Studies of the areas unveiled the following:

- 1) Growth trend data
- 2) Census data
- 3) U.S. Lifestyles v. Study Areas
- 4) Ethos (Worship-driven data)

Literally hundreds of data components are available-including those above.

30

Future Objectives

- **Congregational contact to potentially include:**
- Convey survey roll-up data
- Deeper study of the Percept data related to demographic studies
- West-side church visit informational roll-ups
- Congregational Forums
- Personnel study
- Financial study

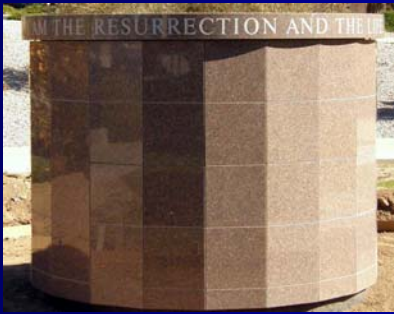
31

Additional Reports to Council in 2007

- **Columbarium Committee:**
 - Ron Christensen
 - Ron Lohrding
 - Lyle Whelchel
 - Paul Vandenburg
 - Barie Fritz
 - Mary Ann O'Brien

32

FLC Columbarium



33

Additional Reports to Council in 2007

- **Revision of FLC Endowment Fund By-laws (on the FLC website):**
 - Duane Sorenson
 - Mark Schaefer
 - Tom Crow
 - Jim Campbell
 - Jason Deshayes – resigned in Dec
 - **Jim Wiler – new member**

34

Vote on Endowment Fund By-law Changes

- **Members of the Endowment Fund Committee are now appointed like all other FLC committees rather than be voted on in the annual election**
- **Clarification that checks for the distribution of funds will be signed by the normal FLC designated signors**
- **VOTE on the changes in the by-laws**

35

Additional Reports to Council in 2007 (VMT report is available on the web)

Vision and Ministry Team:

- Jon Schwenke, Chair
- Clark Aamodt
- Mary Lou Crichton
- Tom Crow
- Debbie Elder
- Tim Eberhard
- Ron Iman
- Mark Platzbecker
- Veronica Richie
- Al Rodney
- Judi Stewart
- John Stichman
- Amber Webb
- Lisa Webster
- Bruce Wilder
- Brenda Yager

36

Additional Reports to Council in 2007

Evaluation of Potential Bus for FLC

– Jim Hansen

- Bus vs van
- Possible usage
- Ownership vs rental
- Detailed cost comparison for various options and levels of usage

37

Evaluation of Potential Bus for FLC

- Cost considerations – vehicle, insurance, storage, operation, maintenance, warranty, size, features, licensing drivers
- Jim's 42 slides also include details and chassis and body specifications (Jim's slides are available in the Sept 07 Council minutes)

38

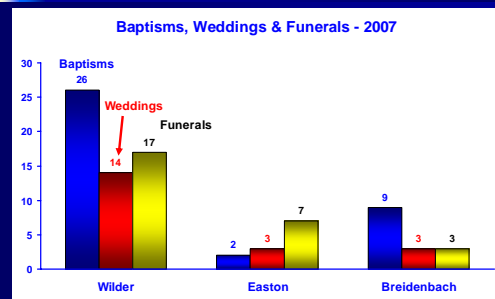
Evaluation of Potential Bus for FLC

Council's Conclusions

- FLC will continue using rental vehicles for the time being
- If a decision were to be made on purchasing a bus at some future date then it would be presented to the congregation for final approval

39

Pastor Workloads – 2007



Scheduled Rotations for Pastors

Council passed the following resolution at it's last meeting:

- Be it resolved that to more evenly divide the workload among its Pastors, Faith Lutheran Church adopts a schedule that rotates its Pastors for baptisms, weddings and funerals. While there may be exceptions to the rotation schedule due to the unavailability of Pastors or other circumstances, the schedule will be followed to the extent possible.

41

Financial Committee

- Phil Mayo, Chair
- Janice Moen
- Clark Aamodt
- Lloyd Bonzon
- Wayne Dobberfuhr (recently moved to CA)

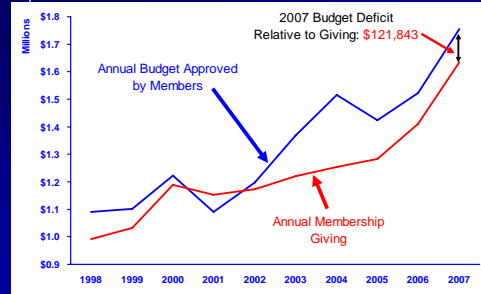
42

2007 Budget Comparison

- We finished 2006 with a deficit relative to giving of \$135,163
- Giving was up 15.7% in 2007 over 2006
- However, we finished 2007 with a deficit relative to giving of \$121,843

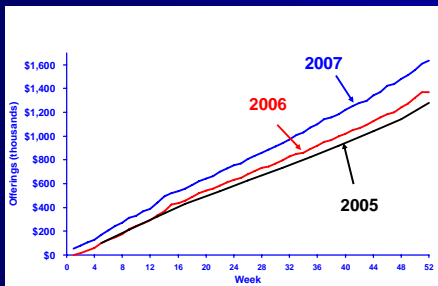
43

Budget vs. Giving 1998-2007



44

Giving Comparison 2005-2007



45

Financial Committee Proposed Budget for 2008

	2007	2008	Change
Missions	\$ 159,628	\$ 191,040	\$ 31,412
Worship	\$ 14,985	\$ 17,380	\$ 2,395
Adult Ministry	\$ 13,050	\$ 21,100	\$ 8,050
Children's Ministry	\$ 9,800	\$ 11,550	\$ 1,750
Youth Ministry	\$ 11,050	\$ 15,570	\$ 4,520
Stewardship/ Evangelism	\$ 8,750	\$ 9,100	\$ 350
Food Services	\$ 6,250	\$ 6,855	\$ 605
Staff Salaries & Benefits	\$ 995,624	\$ 1,039,731	\$ 44,107
Office Operations	\$ 87,452	\$ 74,110	(\$13,342)
Plant Operations	\$ 140,105	\$ 141,345	\$ 1,240
Church Equipment/Assets	\$ 22,760	\$ 13,400	(\$ 9,360)
Debt Retirement	\$ 286,452	\$ 286,452	\$ 0
	\$ 1,755,906	\$ 1,827,633	\$ 71,727
Avg. Giving required 754 / 767 households	\$ 2,329	\$ 2,383	
Household income needed for avg. gift	\$ 23,288	\$ 23,828	
Money Magazine: Median ABQ Family Income:	\$ 51,925	\$ 56,900	

46

Other Business (God Smiles)



47